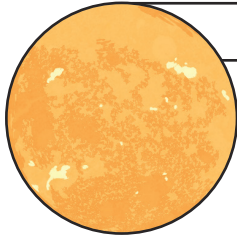
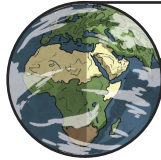


# Exploring Size: Earth, Sun and Moon



The Sun is 1.3927 million km in diameter.



The Earth is 12 742 km in diameter.



The Moon is 3,474.2 km in diameter.



If the Sun and moon are different in size, why do they appear to be the same size in the sky?

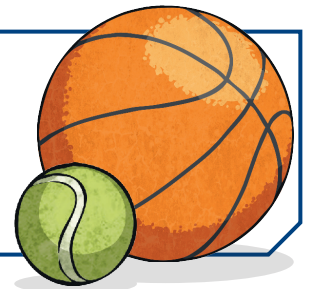
**Safety:** The Sun is millions of kilometres away from Earth however it is so bright it is dangerous to look at.

It can damage the lenses in our eyes.

**Do not look directly at the Sun.**

## You Will Need:

- A group of three
- A Basketball (sun)
- A tennis ball (moon)
- A lot of space outside



## Activity:

1. Allocate roles to each member of your group. One person to be the moon, one the sun and one the Earth.
2. The Earth will stand in front of the moon (holding the tennis ball) and the sun (holding the basketball).
3. The Earth will ask the sun to move backwards until it appears to be the same size as the moon.
4. Swap roles so everyone has a turn at each position.

# Exploring Size: Earth, Sun and Moon

## Learning Reflection:

A drawing of the Sun, Earth and moon.

Something I learnt today was:

Something that I found interesting was:

Something I wonder about: